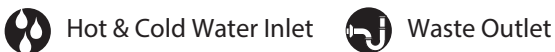
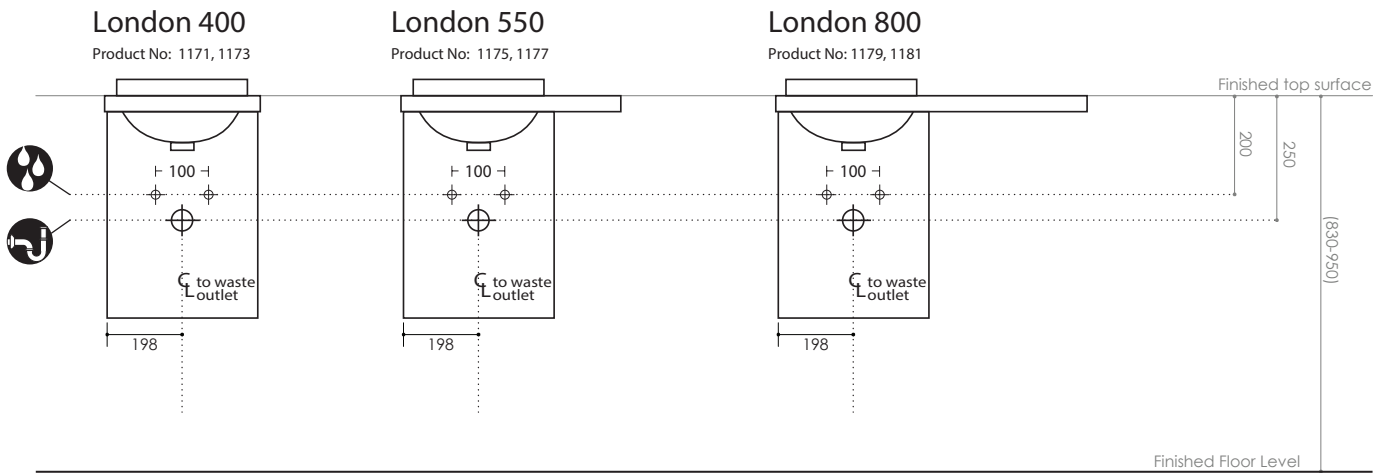
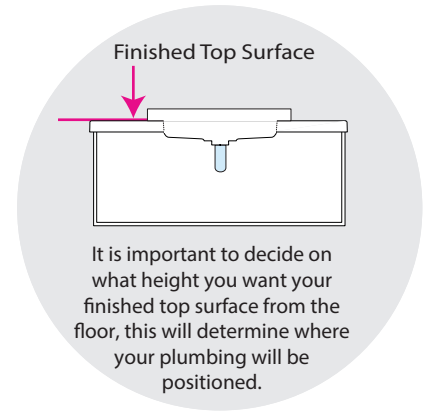


Vanity Range Basins

London Small Space Joy - Cherry Pie Matte

- We suggest that you install your Wall hung vanity between 830-950mm high to the finished top surface.
- For internal division positions - please refer to cabinet specifications
- Note: Waste outlet positioned for standard chrome bottletrap and pop up basin waste.
- Illustrations are representations and not to scale



CABINET SPECIFICATIONS

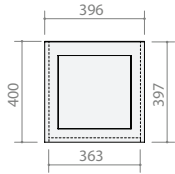
Vanity Range: London Small Space

Basin: Joy

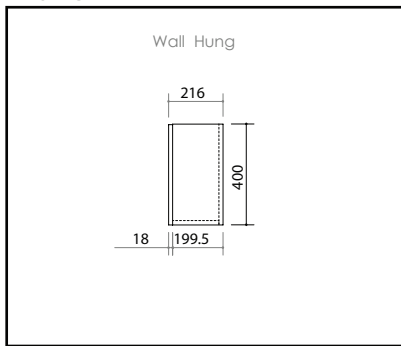
Drawings depict cabinet only. Dotted lines indicate internal cabinet parts.

Gaps inbetween doors and drawers are 2mm. All measurements are in millimetres and are +/- 2mm.

London 400, 550 & 800 Wall -1 Door (left and right hinged)



End View

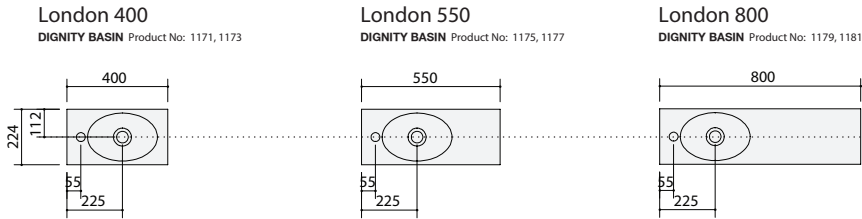


TOP SPECIFICATIONS

Vanity Range: London Small Space

Basin Joy

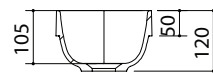
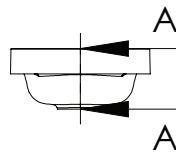
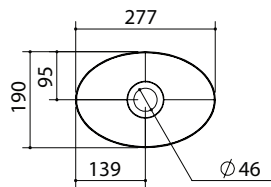
Top specification drawings are of taphole centred to the side of the basin (supplied drilled as standard).
All tops are **20mm** thick.



Fixing:	The top must be sealed to the top sections of the vanity unit with an acetic cured silicone sealant. Epoxy type sealants must not be used
Colour:	Carrara Cherry Pie Only
Dimensions:	All measurements are in millimetres and are +/- 2mm

BASIN SPECIFICATIONS

Product Name Joy
Product Description Cherry Pie Matte Inset Basin - Small Space
Nominal Size 277w x 190d x 120h



SECTION A-A

Bowl Water Volume: 2.5L
Overflow: No overflow
Fixing: The basin must be sealed to the top with an acetic cured silicone sealant. Epoxy type sealants must not be used
Colour: White matte only
Dimensions: All measurements are in millimetres and are +/- 2mm